

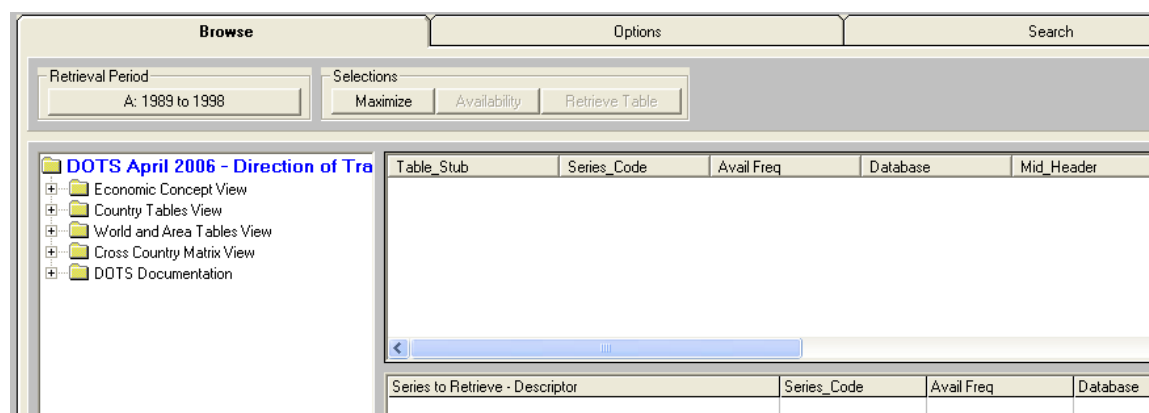
## What is it? Abstract provided through Nesstar WebRetrieval System

The Direction of Trade Statistics (DOTS) Database, a product of the International Monetary Fund (the Fund or IMF), contains exports and imports data by partner countries and areas of Fund member countries and nonmembers such as Cuba and North Korea. The DOTS CD-ROM contains all trade series for all countries that appear in the Direction of Trade Statistics Yearbook (DOTSY).

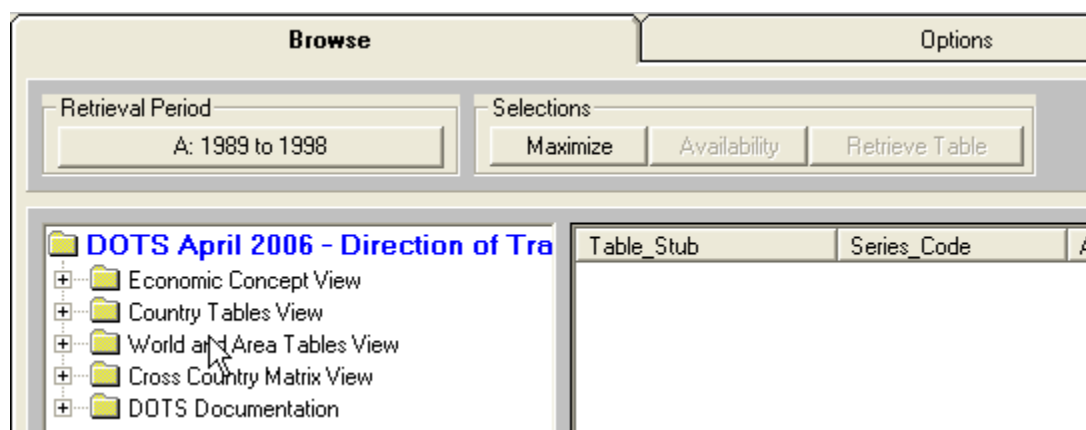
The Direction of Trade Statistics (DOTS) database presents figures on the value of merchandise exports and imports by trade partners as well as area and world aggregates showing trade flows between major areas of the world. The DOTS database provides users with more than approximately 100,000 time series of annual, quarterly, and monthly trade data for approximately 186 countries. These data are also published in the Direction of Trade Statistics Yearbook (DOTSY). Data on the CD-ROM are available from 1980. Beginning in 1981, nonreported monthly data are estimated following a defined estimation procedure. A detailed explanation of this procedure is found in A Guide to the Direction of Trade Statistics (1993).

The product is designed to meet the needs of two sets of users - those who prefer to access the database through an interactive interface and those who prefer to access or process the full contents of the database directly. All figures are presented in U.S. dollars.

## What does it look like?



Retrieval Period box – allows selection of specific years.



You can select Annual, Quarterly or Monthly data (Frequency box). You may also select a single frequency – maybe only interested in Annual data – OR you may select multiple frequency – maybe interested in both Annual and Quarterly data.

Data ranges from 1945 through to present. Years 2008-2100 are also available if projected data exists.

**Retrieval Period**

**Freq. Setting**

Single Frequency

Multiple Frequency

**Frequency** Annual (A)

**Start**

Period Year

Year 1945

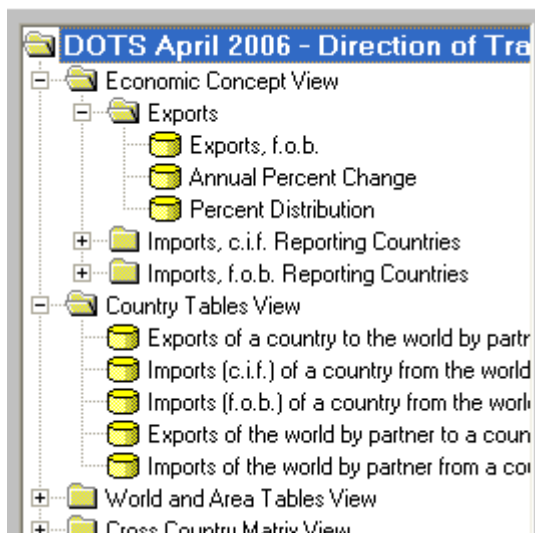
**End**

Period

Year

OK Cancel

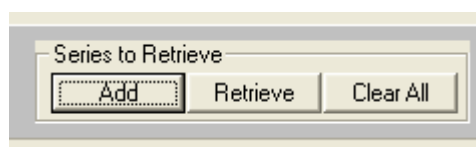
To select series of interest – drill down by clicking the to open the folders. Once you see the icon – you have reached the lowest series level. Double click the to select the series.



Once you've selected the topic your screen should look something like this:



You now have the option to select the country of interest and the series of interest. The Count column shows you how many countries will have data for the series listed. Select a country by clicking on it, then select the series by clicking on it, to complete the selection. Click on Add in the Series to Retrieve box in the upper right hand corner.

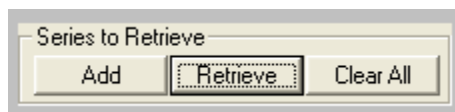


If the data does NOT exist for the country, series you've selected, the Series to Retrieve table will remain clear. In the example below –Exports %Change – trade between Middle East and Tanzania.

Series to Retrieve (1) - Descriptor	Series_Code	Avail Freq	Database	Country
EXPORTS % CHG MIDDLE EAST	73870C.DZD407	A,Q,M	DOT	Tanzania

The data is available Annually, Quarterly or Monthly (Avail Freq column)

To retrieve the data – click on Retrieve in the Series to Retrieve box.



A new window, the Data Viewer for IFS, will open with the selected data displayed.

The screenshot shows a software window with a menu bar (File, Edit, Insert, Format, Tools, Help) and a toolbar with various icons. Below the toolbar is a text area containing 'Arial', '10', and formatting options like Bold (B), Italic (I), Underline (U), and a 100% zoom level. The main area displays a table with the following data:

A1		CDROM SCALE_FACTOR										
	F	G	H	I	J	K	L	M	N	O	P	Q
1	SERIES_CODE	DESCRIPTOR	1989	1990	1991	1992	1993	1994	1995	1996	1997	1998
2	73870C.DZD407	EXPORTS % CHG MIDDLE EAST	-28.23	57.44	1.27	46.66	118.33	32.51	49.46	-70.17	17.23	-10.03
3												

The data can now be printed or saved in a variety of formats. Use the Save As option to select Excel.