

What is it? Abstract provided through Nesstar WebRetrieval System

The International Financial Statistics (IFS) Database and Browser on CD-ROM is a product of the International Monetary Fund. It is based on the printed copy of IFS that has been published monthly since January 1948. Each CD-ROM issue is closely keyed to the same months printed issue and contains data sets for most Fund members, as well as for Aruba and the Netherlands Antilles.

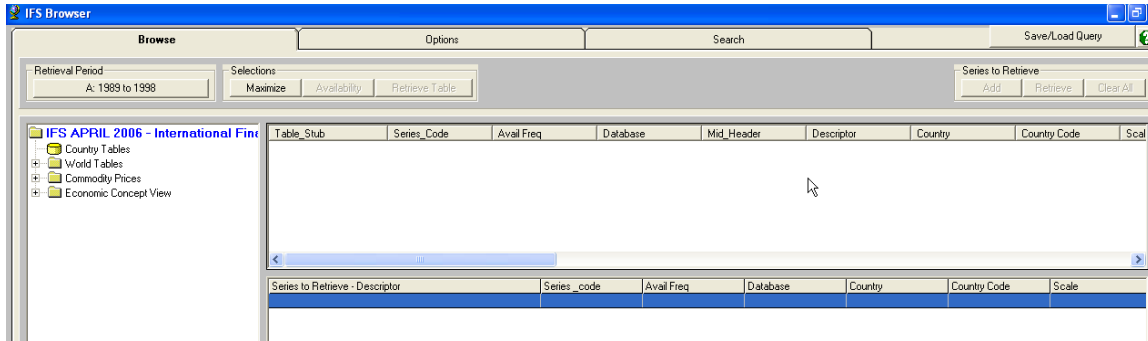
The IFS database on CD-ROM provides subscribers with time series data, identified by country code and line number, that show major economic aggregates used in the analysis of economic developments and includes data on the following topics: balance of payments, banking and financial systems, labor, exchange rates, Fund position, government finance, interest rates, international liquidity, national accounts, population, prices, production, and trade.

The approximately 32,000 time series found in the IFS database on CD-ROM cover more than 200 countries and include the following: 1) all series appearing in the printed IFS country pages; 2) all series published in the printed IFS world tables, except for the daily exchange rates appearing in the exchange rate tables; 3) the following exchange rate series as available: aa, ac, ae, af, ag, ah, b, c, de, dg, ea, eb, ec, ed, g, rb, rd, rf, rh, sa, sb, sc, sd, wa, wc, we, wf, wg, wh, xe, xf, ye, yf, nec, rec, aat, aet, rbt, rft, neu, reu, and ahx; 4) Fund accounts time series denominated in SDRs: 2af, 2al, 2ap, 2aq, 2as, 2at, 2ej, 2ek, 2en, 2eo, 2f.s, 1c.s, 2tl, 2egs, 2eb, 2h.s, 1bd, 1b.s, 2dus, 2krs, 2ees, 2kxs, 2eu, 2ey, 2eg, 2ens, 2ehs, 2eqs, 2ers, 2ets, 2kk, 2lk, 2kl, 2ll, 1ch, and 1cj; and in percentages, 2tlp, 2fz, and 1bf; 5) producer price index series (63) and consumer price index series (64); 6) export and import series (70 and 71); and 7) balance of payments series (78aad to 79ded).

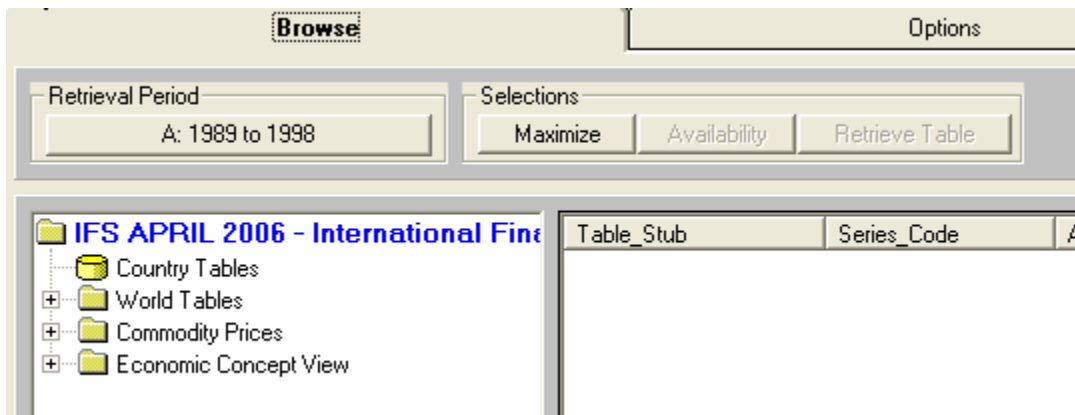
The series referred to in item 3 above are for all IMF members, plus Aruba and Netherlands Antilles. The series referred to in items 4 through 7 are for all countries for which data are available, although some are not published in the printed IFS publication. All series on the CD-ROM contain publication code F (the publication code will be explained ahead in section C.1.4) except for certain euro area series that contain the code W.

The IFS database on CD-ROM contains data in three frequencies (annual, quarterly, and monthly). When the data are available, the annual entries generally begin in 1948, with quarterly and monthly entries beginning in 1957.

What does it look like?

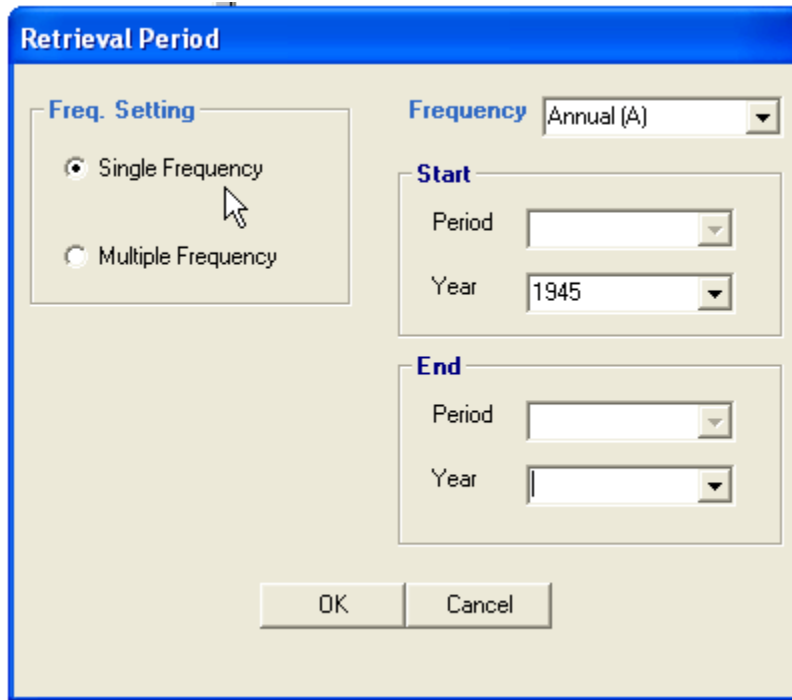


Retrieval Period box – allows selection of specific years.






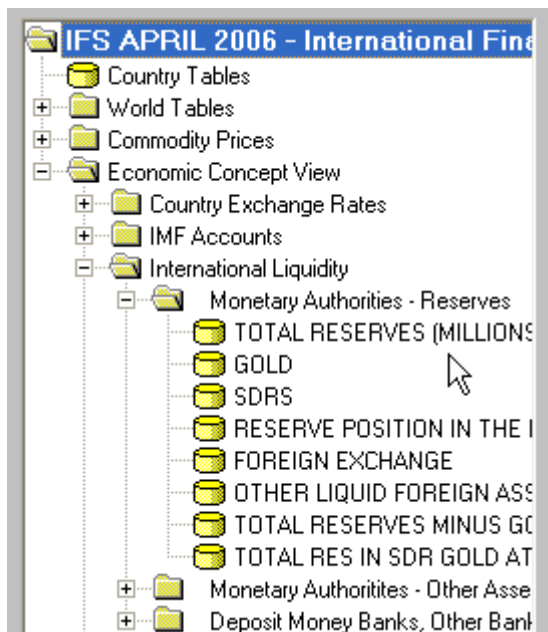
You can select Annual, Quarterly, or Monthly data (Frequency box). You may also select a single frequency – maybe only interested in Annual data – OR you may select multiple frequency – maybe interested in both Annual and Quarterly data.

Data ranges from 1945 through to present. Years 2008-2100 are also available if projected data exists.

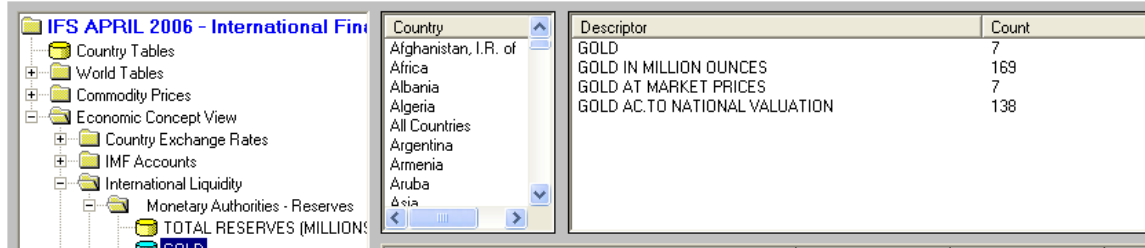


The 'Retrieval Period' dialog box is used to configure data retrieval settings. It features a 'Freq. Setting' section with radio buttons for 'Single Frequency' (selected) and 'Multiple Frequency'. A 'Frequency' dropdown menu is set to 'Annual (A)'. The 'Start' section includes 'Period' and 'Year' (1945) dropdowns. The 'End' section includes 'Period' and 'Year' dropdowns. 'OK' and 'Cancel' buttons are at the bottom.

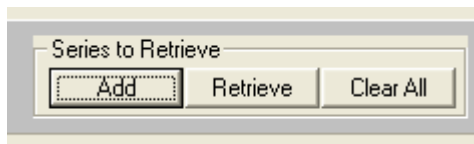
To select series of interest – drill down by clicking the  to open the folders. Once you see the  icon – you have reached the lowest series level. Double click the  to select the series.



Once you've selected the topic your screen should look something like this:



You now have the option to select the country of interest and the series of interest. The Count column shows you how many countries will have data for the series listed. Select a country by clicking on it, then select the series by clicking on it, to complete the selection. Click on Add in the Series to Retrieve box in the upper right hand corner.

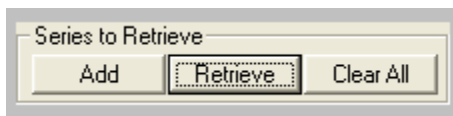


If the data does NOT exist for the country, series you've selected, the Series to Retrieve table will remain clear. In the example below – Gold in Million of ounces was selected for Algeria.

Series to Retrieve (1) - Descriptor	Series_code	Avail Freq
GOLD IN MILLION OUNCES	612.1AD.ZF...	A,Q,M

The data is available Annually, Quarterly or Monthly (A,Q,M under the Avail Freq column).

To retrieve the data – click on Retrieve in the Series to Retrieve box.



A new window, the Data Viewer for IFS, will open with the selected data displayed.

The screenshot shows a window titled "Data Viewer for IFS" with a menu bar (File, Edit, Insert, Format, Tools, Help) and a toolbar. The main area displays a table with the following data:

A1		CDROM SCALE_FACTOR										
	F	G	H	I	J	K	L	M	N	O	P	Q
1	SERIES_CODE	DESCRIPTOR	1997	1998	1999	2000	2001	2002	2003	2004	2005	2006
2	612.1AD.ZF...	GOLD IN MILLION OUNCES	5.58	5.58	5.58	5.58	5.58	5.58	5.58	5.58	5.58	n.a.
3												

The data can now be printed or saved in a variety of formats. Use the Save As option to select Excel.