

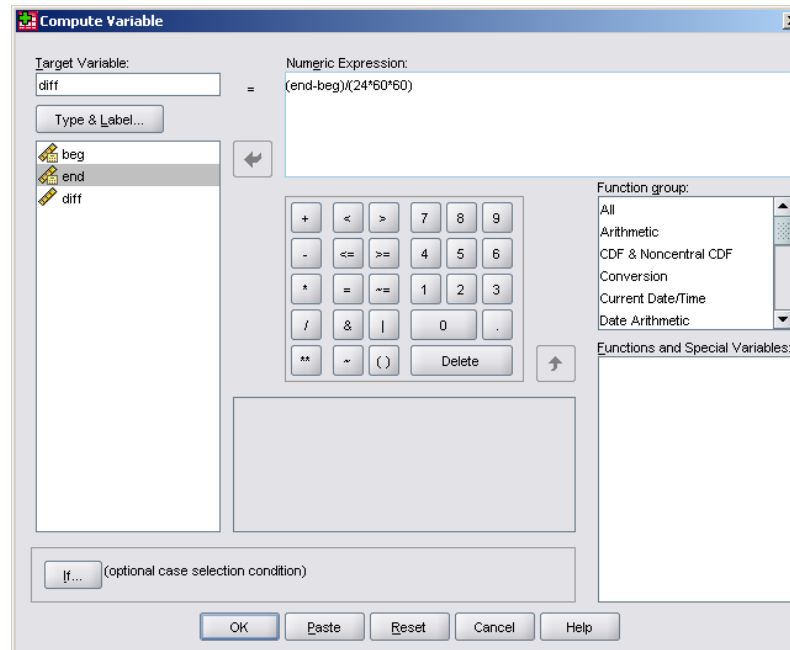
There are two methods that can be employed to determine the duration of an event. The first method uses the **Compute Variable** function and the second utilizes **Data and Time Wizard** function. Both can be found in the Tool Bar under Transform.

Method One – Compute Variable

Within SPSS date/time values are stored as the number of seconds since the start of the Gregorian calendar which is October 14, 1582. To get the duration of an event you will need to subtract the end date (end) from the start date (beg). The results will be reported number of seconds. To convert the results to the number of days divide by the number of seconds in a day which is 86,400 seconds/day (= 24 hours/day * 60 minutes/hours * 60 seconds/minutes).

Here are the steps

1. Click on Transform>Compute Variable.
2. Type in a name of single target variable. It can be an existing variable or a new variable to be added to the working file.
3. The numeric expression will subtract the end date (end) from the start date (beg) and will take on this form: $(\text{end}-\text{beg})/(24*60*60)$.

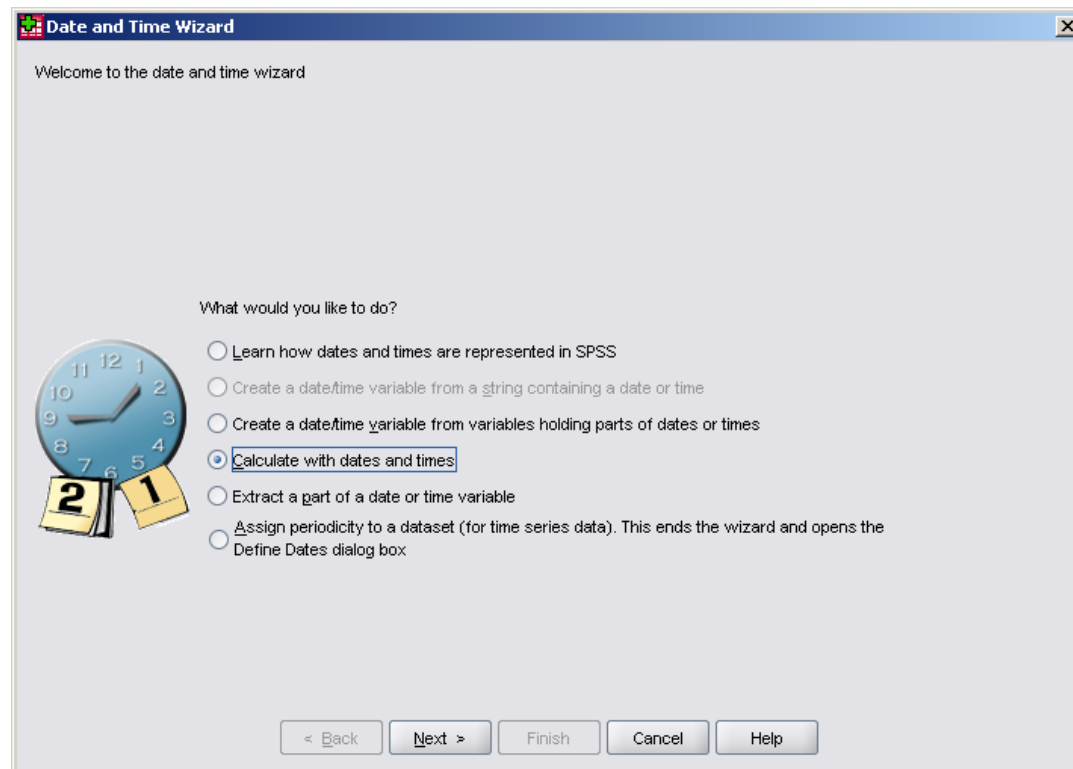


Method Two - Data and Time Wizard

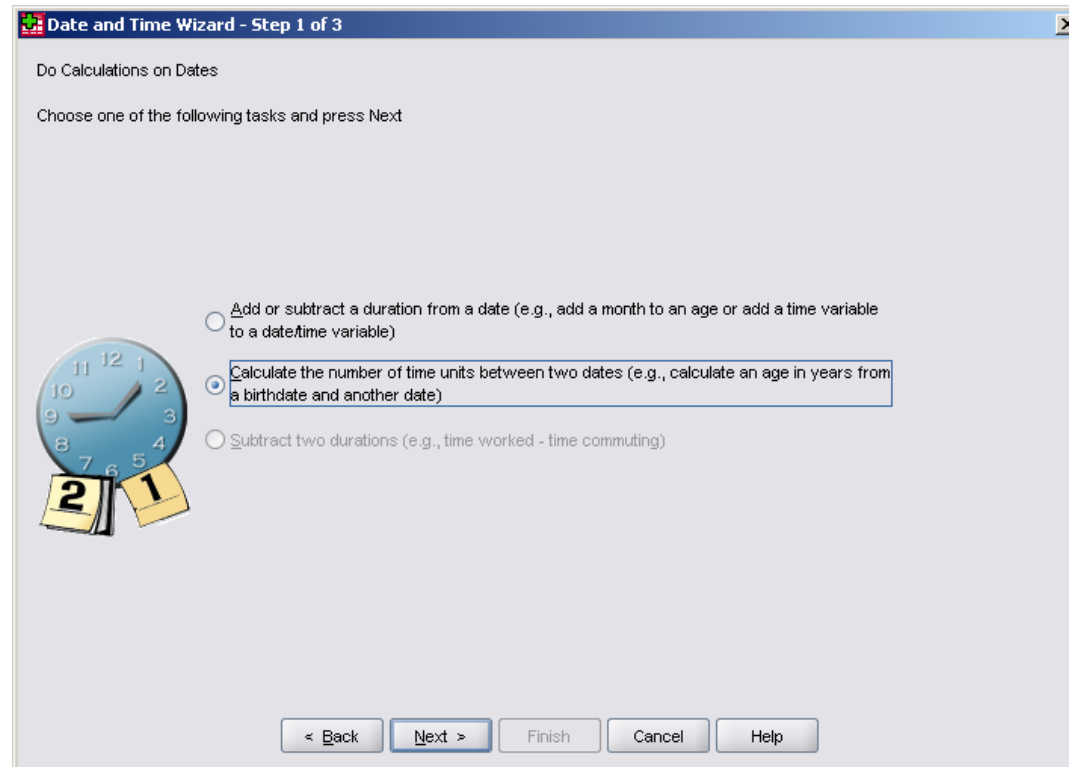
The Date and Time Wizard offers assistance for performing common tasks associated with date and time variables. The steps below outline how to calculate the length of time between a start and end date.

Here are the steps:

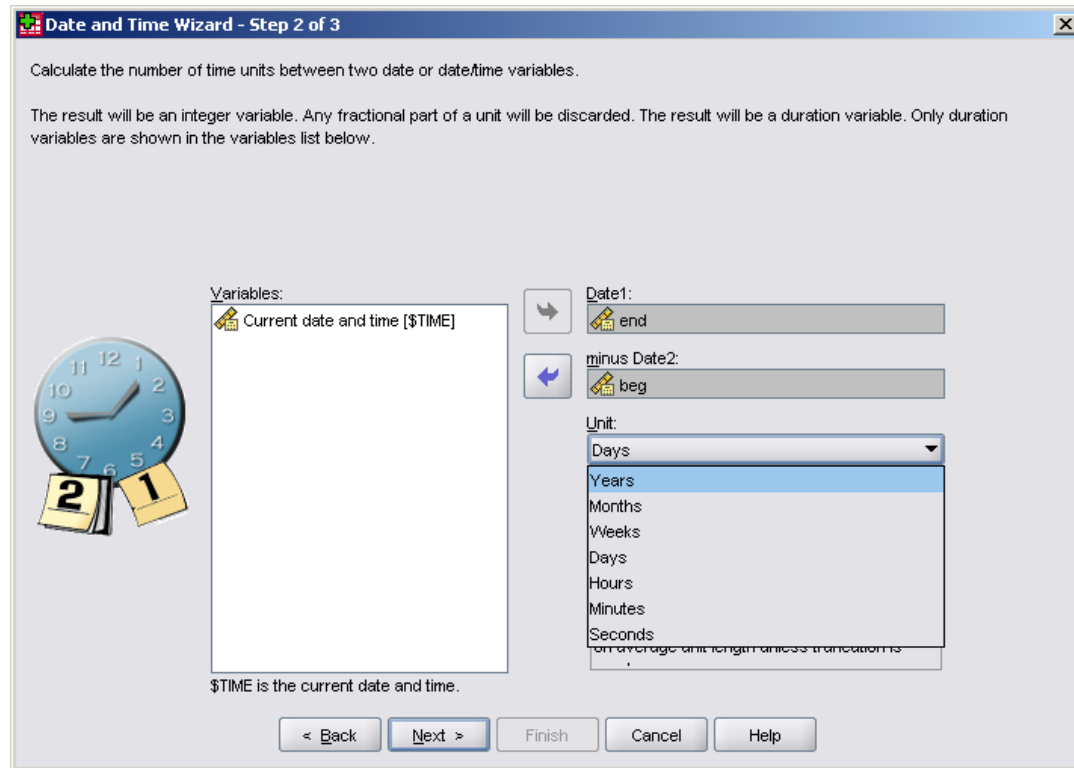
1. Click on Transform>Date and Time Wizard and the following screen appears. Click on the Calculate with date and times option.



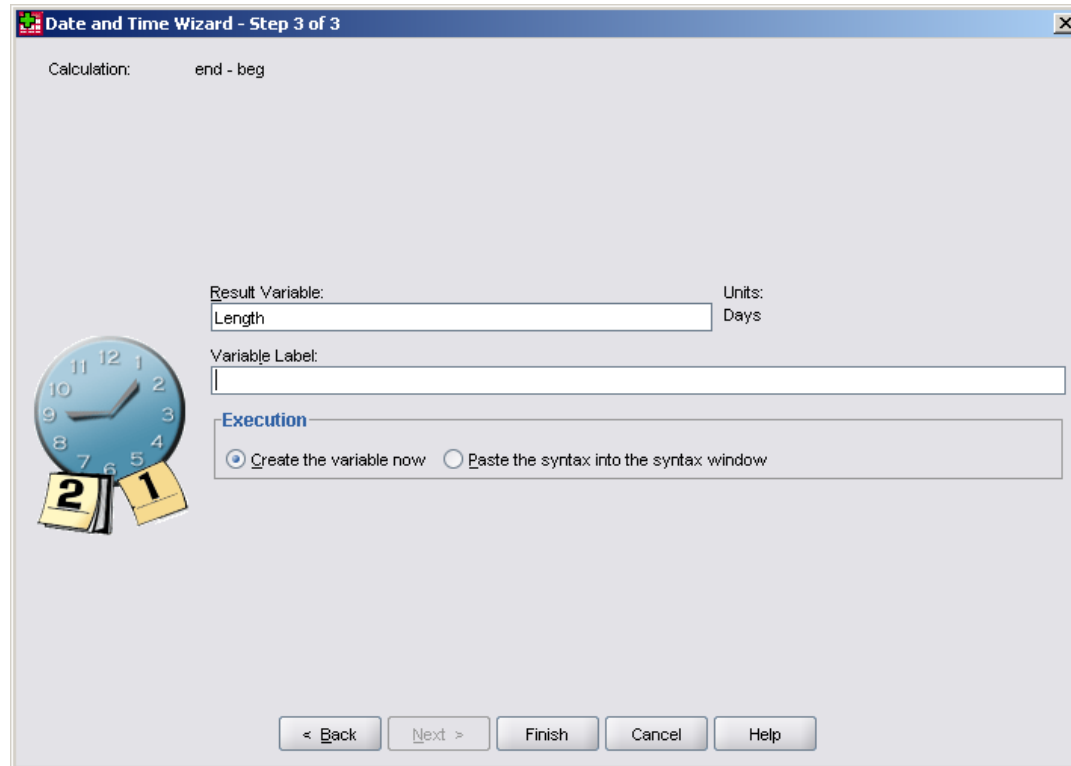
2. In the next window select the “Calculated the number of time units between two dates” option.



3. In this window, select the end date for the **Date1** and the start date for **Date2** and the units you would like the results to be represented in such as years, months, weeks, days, hours, minutes or seconds.



4. In the last window, the result variable is specified along with its variable label. Click on the Finish button and once the calculation is complete the result can be found in the Data View under this variable.



Need Additional Help?

If you require additional assistance with using SPSS please feel free to contact the Data Resource Centre located on the first floor of the library behind the reference desk. You can either drop-in, phone x56417 or email drc@listserv.uoguelph.ca.