

You manage a team that sells computer hardware to software development companies. At each company, your representatives have a primary contact. You have categorized these contacts by the department of the company in which they work (Development, Computer Services, Finance, Other, Don't Know). This information is collected in contacts.sav (see Sample Files). And you want to create a dummy variable with values 1 if the dept. of the contact person is computer services and 0 elsewhere.

*contacts.sav [DataSet2] - PASW Statistics Data Editor

File Edit View Data Transform Analyze Graphs Utilities Add-ons Window Help

1 :

	dept	rank	sale	time	size
1	Finance	Employee	65.00	7	Medium (101-500)
2	Computer services	Jr. manager	28.00	1	Small (31-100)
3	Finance	VP	134.00	13	Medium (101-500)
4	Development	Sr. manager	58.00	2	Medium (101-500)
5	Computer services	Jr. manager	7.50	19	Very small (<=30)
6	Computer services	Don't know	7.00	4	Very small (<=30)
7	Don't know	Pres/CEO/CFO	9.00	9	Very small (<=30)
8	Finance	Sr. manager	35.50	15	Small (31-100)
9	Finance	Don't know	6.00	2	Very small (<=30)
10	Finance	Employee	248.00	7	Medium (101-500)
11	Computer services	Don't know	296.00	1	Large (501+)
12	Finance	Don't know	38.50	3	Small (31-100)
13	Development	Jr. manager	9.00	18	Very small (<=30)
14	Computer services	Jr. manager	36.00	11	Small (31-100)
15	Finance	Don't know	15.50	4	Small (31-100)
16	Finance	Sr. manager	29.50	6	Small (31-100)

*contacts.sav [DataSet2] - PASW Statistics Data Editor

File Edit View Data Transform Analyze Graphs Utilities Add-ons Window Help

Compute Variable...

Count Values within Cases...
Shift Values...

Recode into Same Variables...
Recode into Different Variables...
Automatic Recode...
Visual Binning...
Optimal Binning...

Rank Cases...

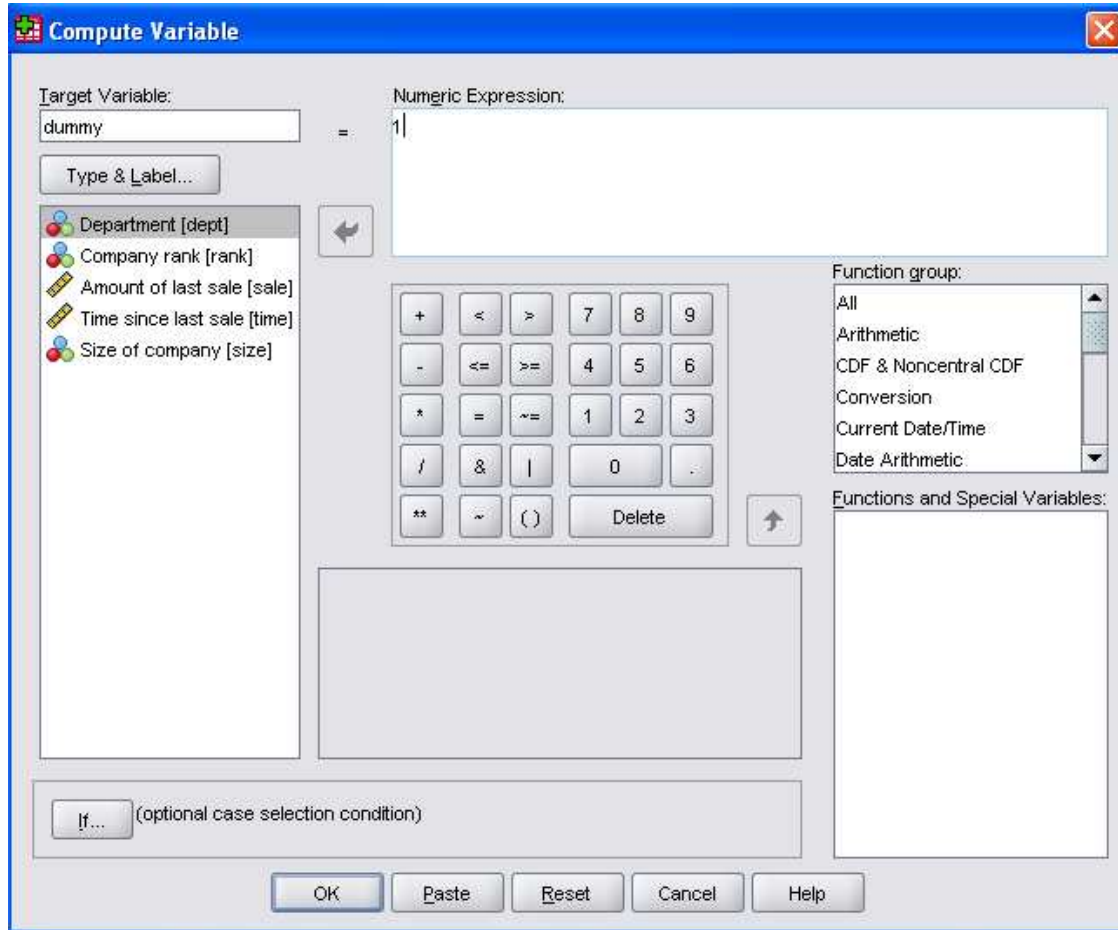
Date and Time Wizard...
Create Time Series...
Replace Missing Values...
Random Number Generators...

Run Pending Transforms Ctrl-G

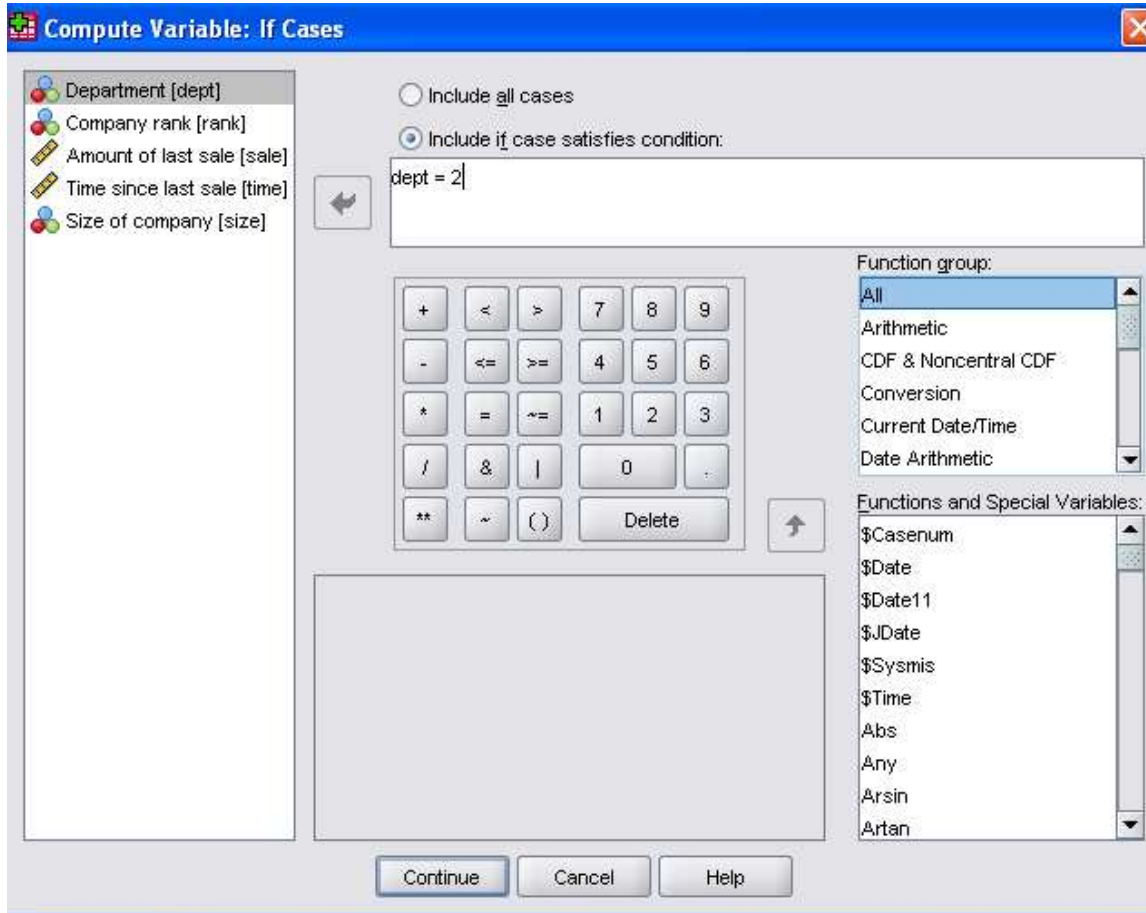
	ale	time	size
1	65.00	7	Medium (101-500)
2	28.00	1	Small (31-100)
3	134.00	13	Medium (101-500)
4	58.00	2	Medium (101-500)
5	7.50	19	Very small (<=30)
6	7.00	4	Very small (<=30)
7	9.00	9	Very small (<=30)
8	35.50	15	Small (31-100)
9	6.00	2	Very small (<=30)
10	248.00	7	Medium (101-500)
11	296.00	1	Large (501+)
12	38.50	3	Small (31-100)
13	9.00	18	Very small (<=30)
14	36.00	11	Small (31-100)
15	15.50	4	Small (31-100)

To create a dummy variable, from the menus choose:

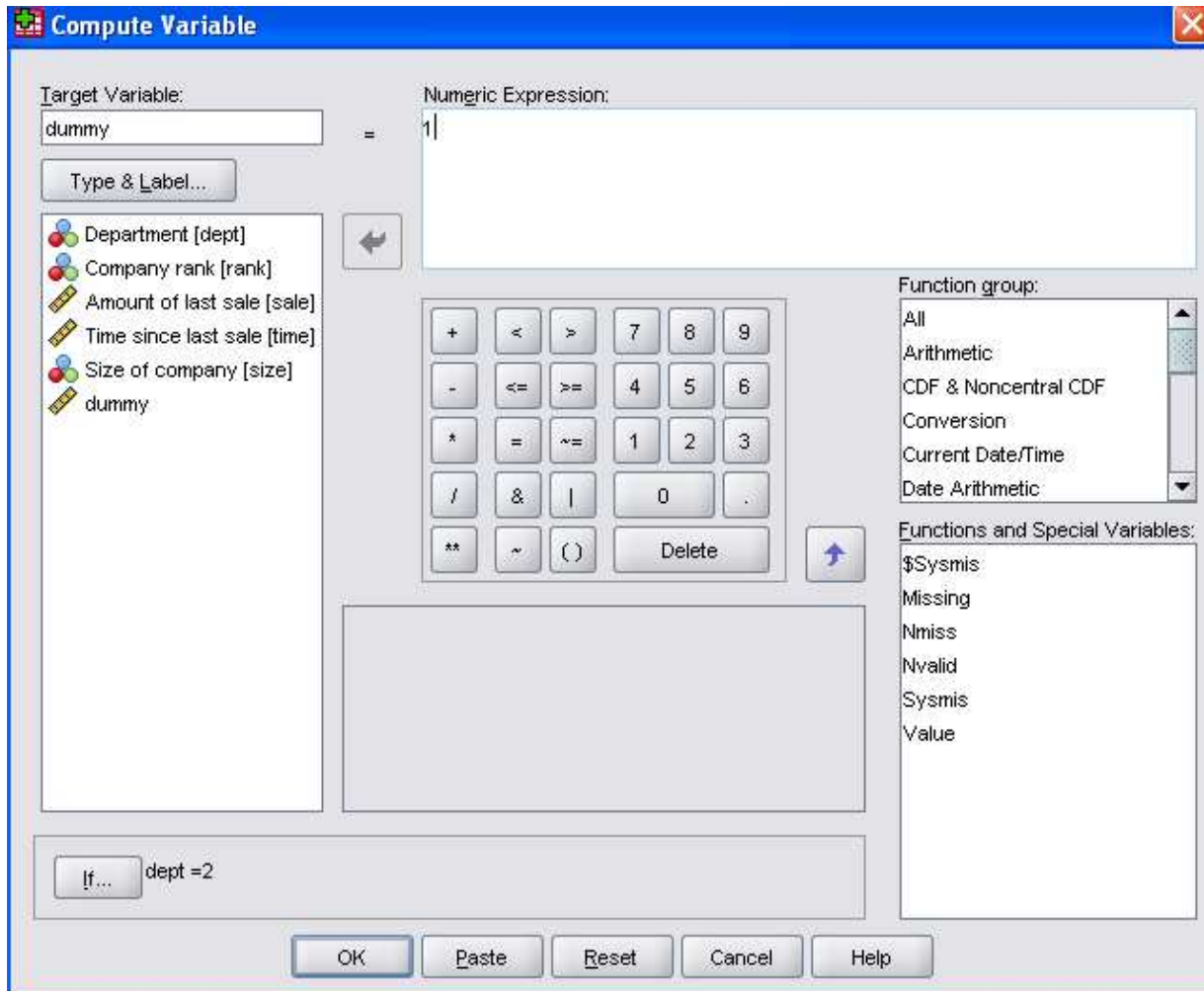
Transform
Compute Variable...



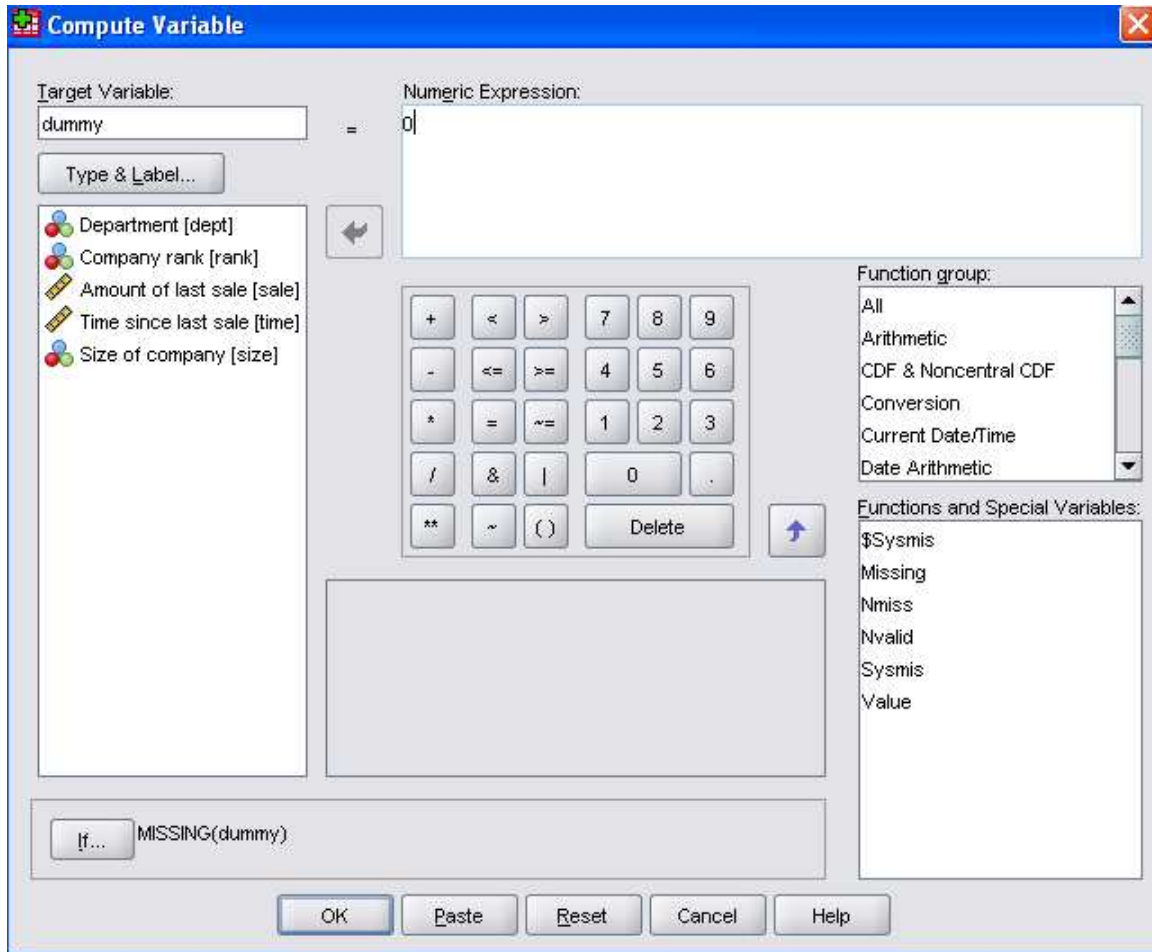
- For the target variable type dummy
- In the numeric expression enter 1
- Click If.....



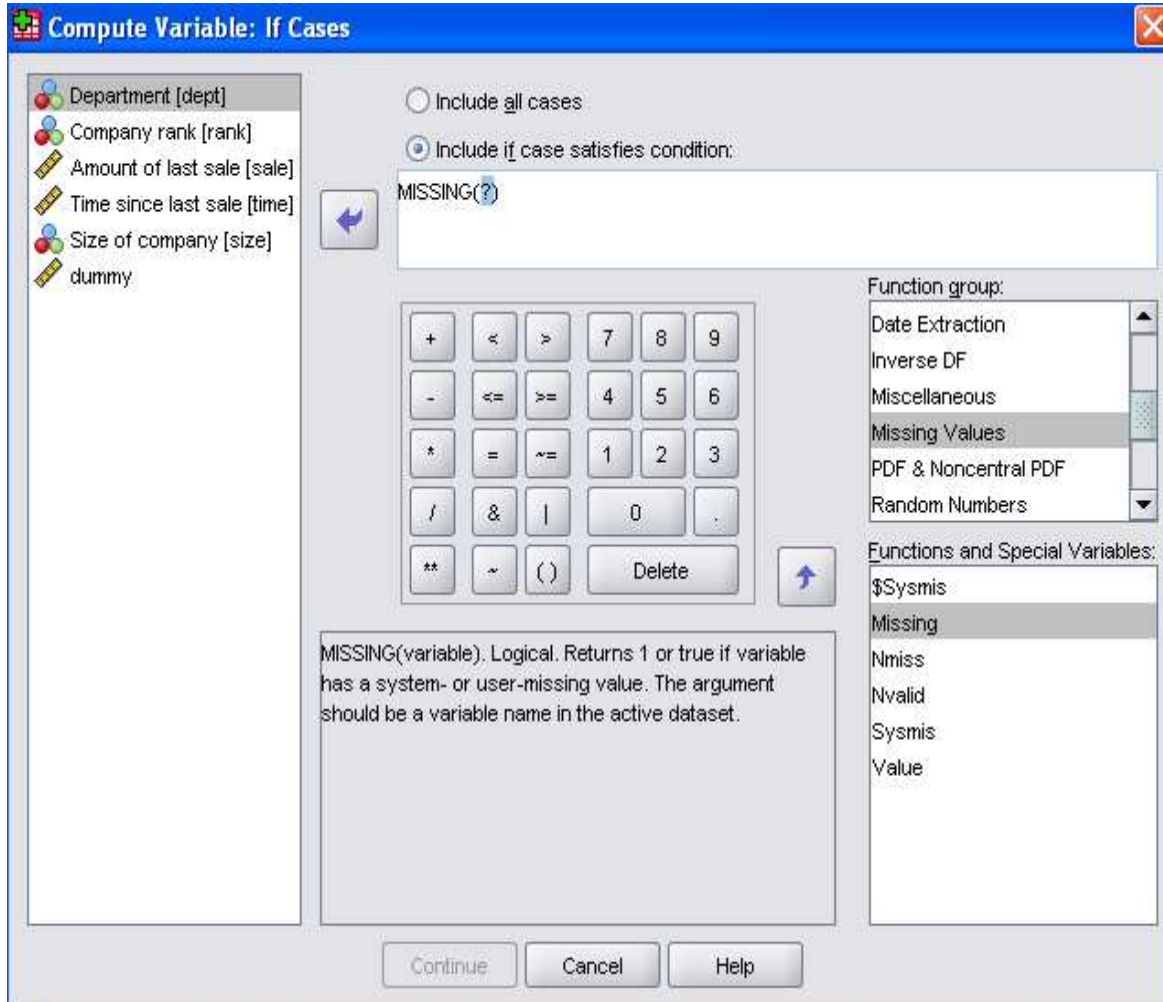
- Select include if case satisfies condition.
- Select Department [dept] in the source variable list click the arrow button to copy it to the expression box.
- Click the equal (=) button on calculator pad in the dialog box.
- Type 2 after the equal sign.
- Click continue



➤ Click OK.



- Now again go to the compute variable from the transform menu.
- Enter 0 in the numeric expression box.
- Click If.....



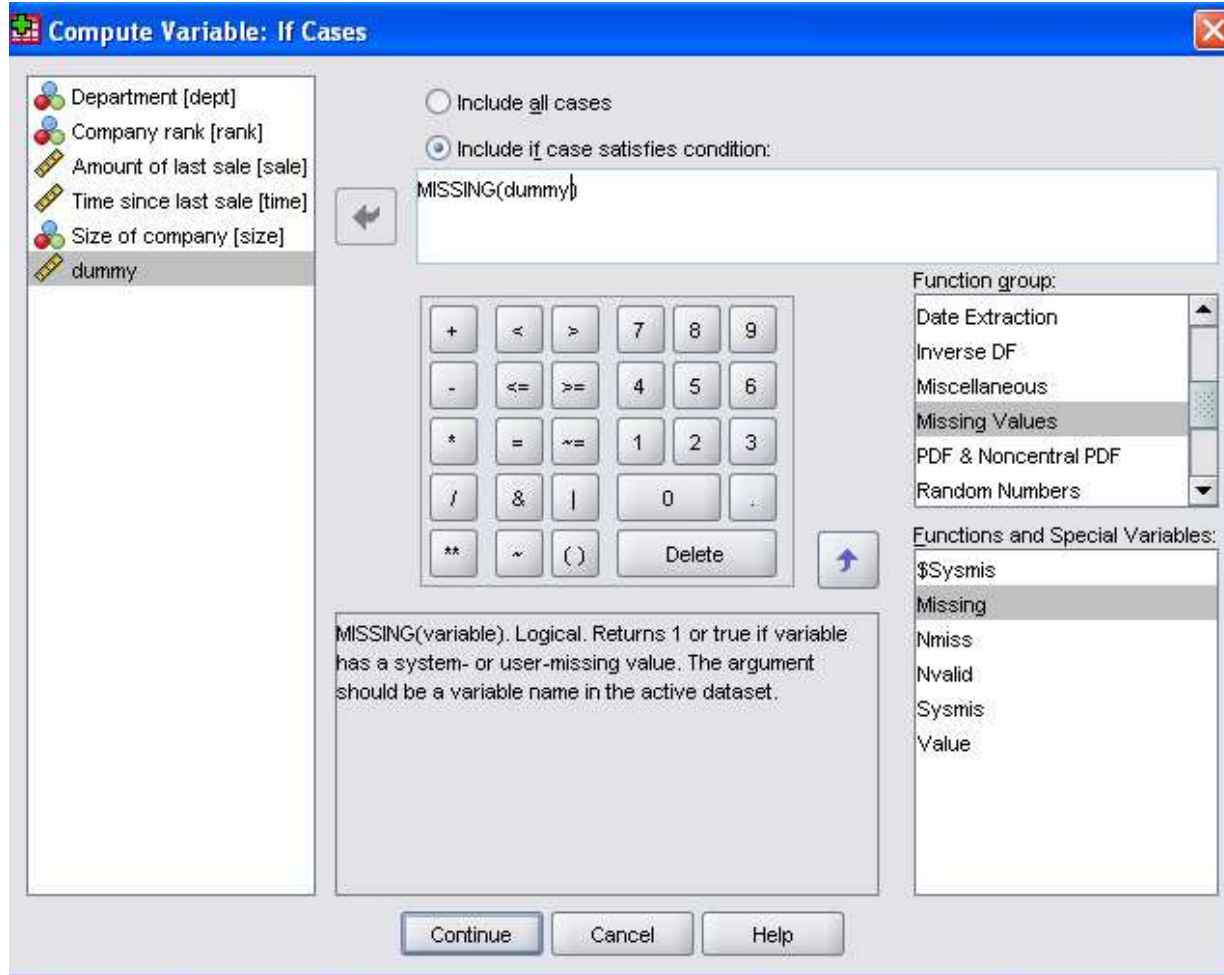
- Select include if case satisfies condition.
- Use predefined functions in expressions. More than 70 built-in functions are available, including:
 - Arithmetic functions
 - Statistical functions
 - Distribution functions
 - Logical functions
 - Date and time aggregation and extraction functions
 - Missing-value functions
 - Cross-case functions
 - String functions

Functions are organized into logically distinct groups, such as a group for arithmetic operations and another for computing statistical metrics.

- Select the Missing-value functions and then Missing in the sub functions.

To paste a function into an expression:

- Position the cursor in the expression at the point where you want the function to appear.



- Select dummy in the source variable list click the arrow button to copy it inside the brackets.
- Click continue

contacts.sav [DataSet2] - PASW Statistics Data Editor

File Edit View Data Transform Analyze Graphs Utilities Add-ons Window Help

2: dept 2

	dept	rank	sale	time	size	dummy
1	Finance	Employee	65.00	7	Medium (101-500)	.00
2	Computer services	Jr. manager	28.00	1	Small (31-100)	1.00
3	Finance	VP	134.00	13	Medium (101-500)	.00
4	Development	Sr. manager	58.00	2	Medium (101-500)	.00
5	Computer services	Jr. manager	7.50	19	Very small (<=30)	1.00
6	Computer services	Don't know	7.00	4	Very small (<=30)	1.00
7	Don't know	Pres/CEO/CFO	9.00	9	Very small (<=30)	.00
8	Finance	Sr. manager	35.50	15	Small (31-100)	.00
9	Finance	Don't know	6.00	2	Very small (<=30)	.00
10	Finance	Employee	248.00	7	Medium (101-500)	.00
11	Computer services	Don't know	296.00	1	Large (501+)	1.00
12	Finance	Don't know	38.50	3	Small (31-100)	.00
13	Development	Jr. manager	9.00	18	Very small (<=30)	.00
14	Computer services	Jr. manager	36.00	11	Small (31-100)	1.00
15	Finance	Don't know	15.50	4	Small (31-100)	.00

- The dummy variable is displayed in the Data Editor with values 1 for the computer services and 0 elsewhere.
- The variable is added to the end of the file, it is displayed in the far right column in Data View and in the last row in Variable View.